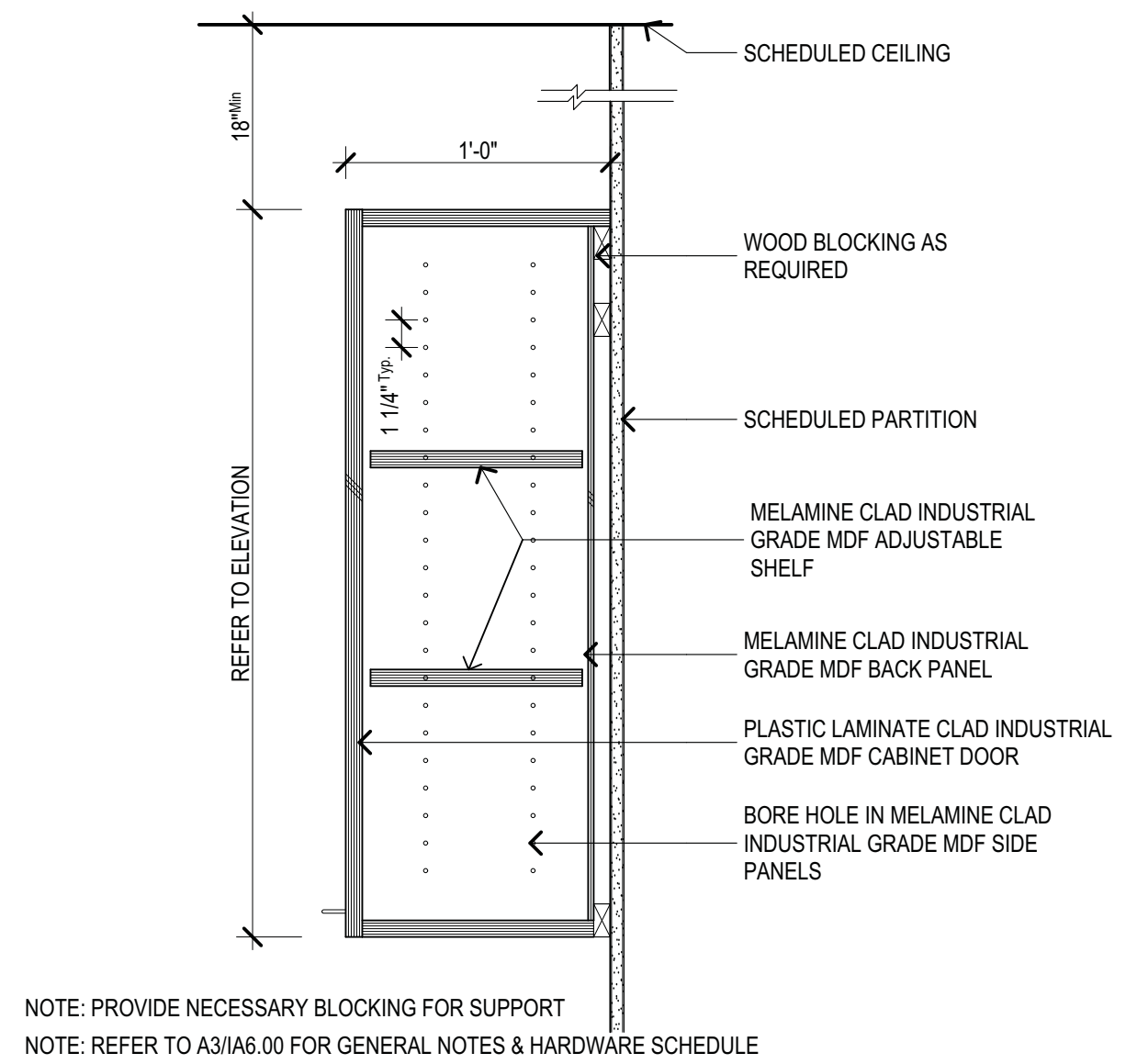
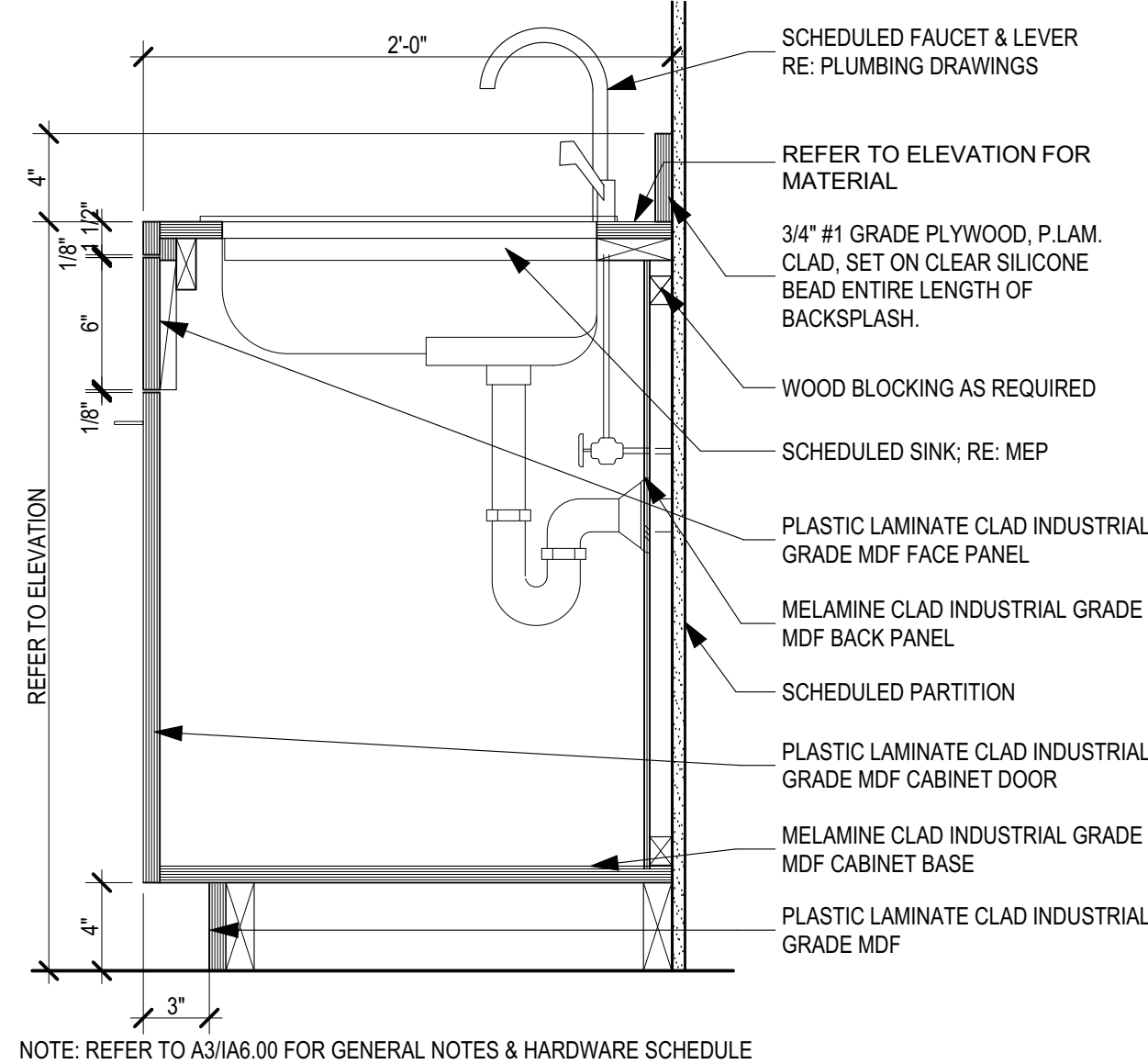


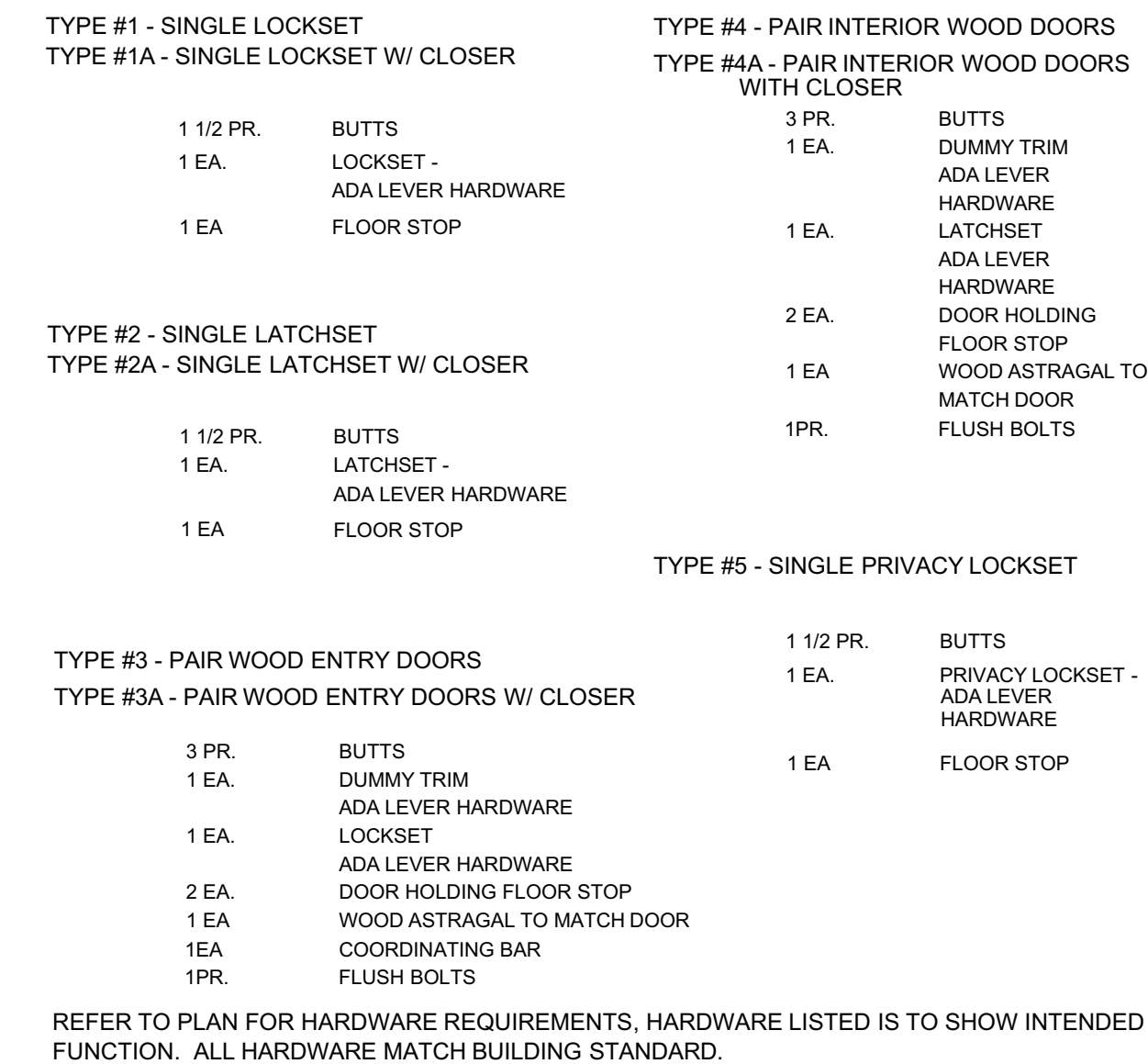
FOR MOUNTING HEIGHTS, LOCATIONS, CLEARANCES, AND CLEAR FLOOR SPACE REFER TO TAB SHEET IA0.30



Upper Cabinet Short D2
 Scale: 1 1/2" = 1'-0"

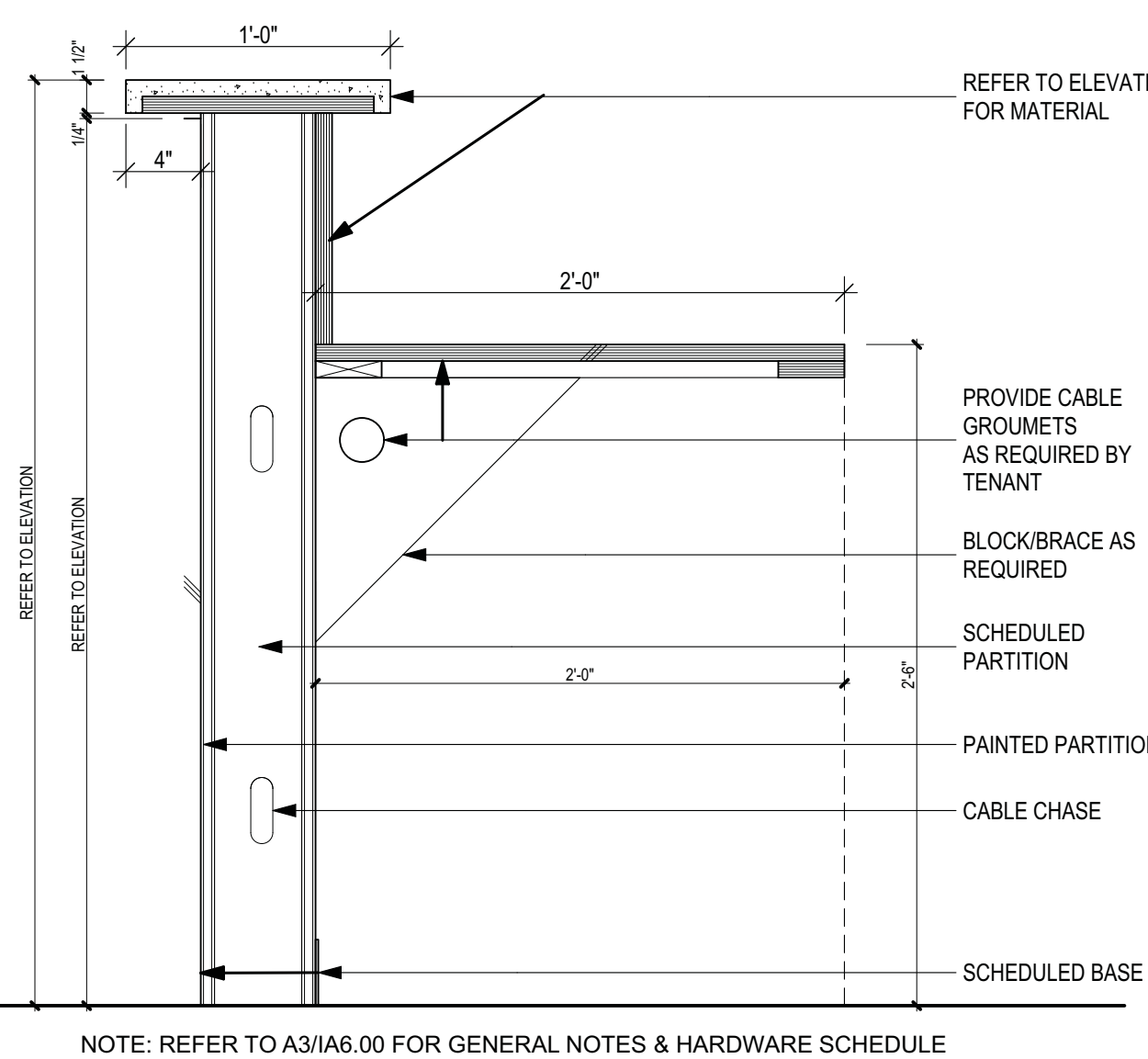


Base Cabinet - Sink D3
 Scale: 1 1/2" = 1'-0"

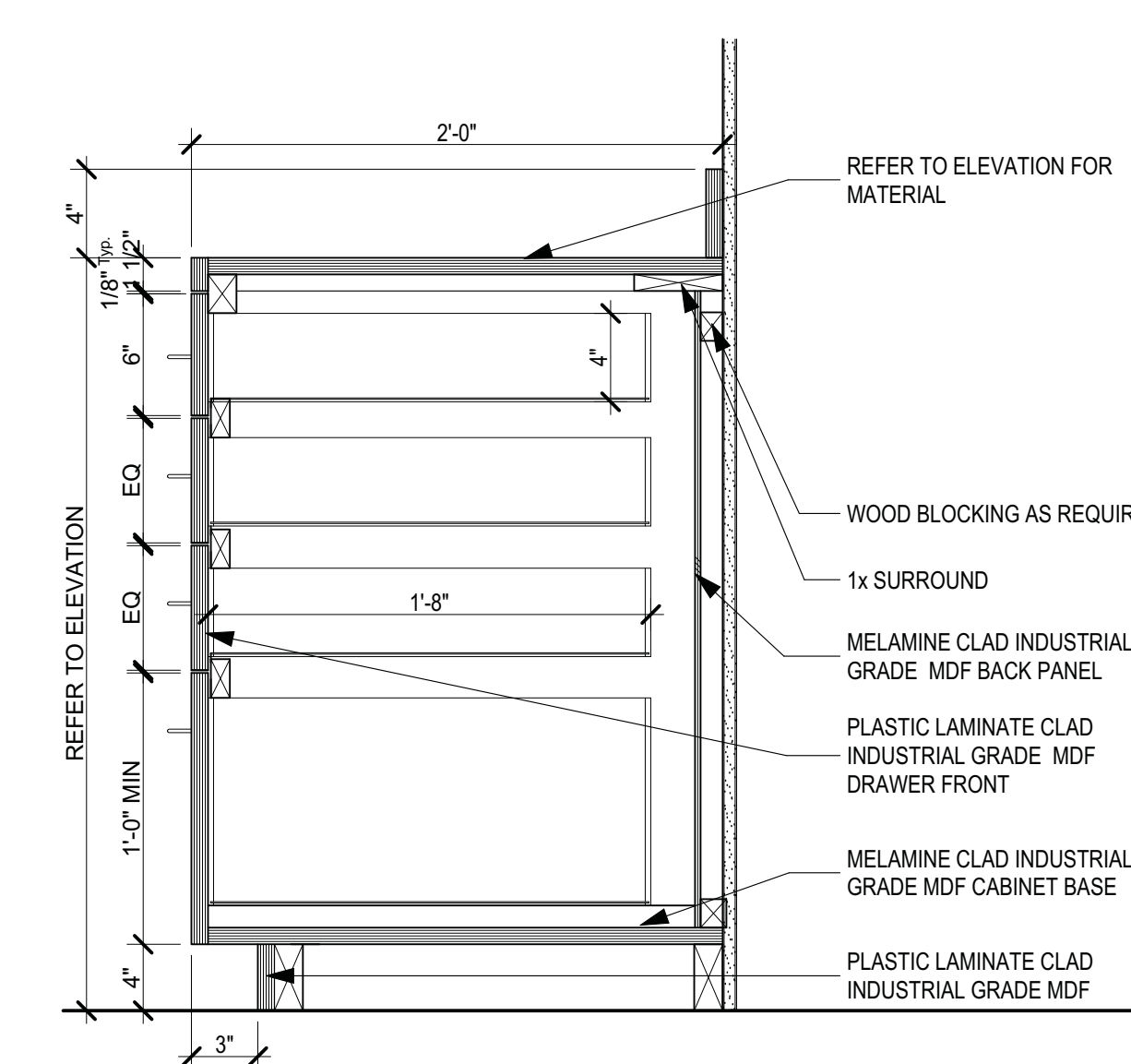


Door Hardware D4
 Scale: 1 1/2" = 1'-0"

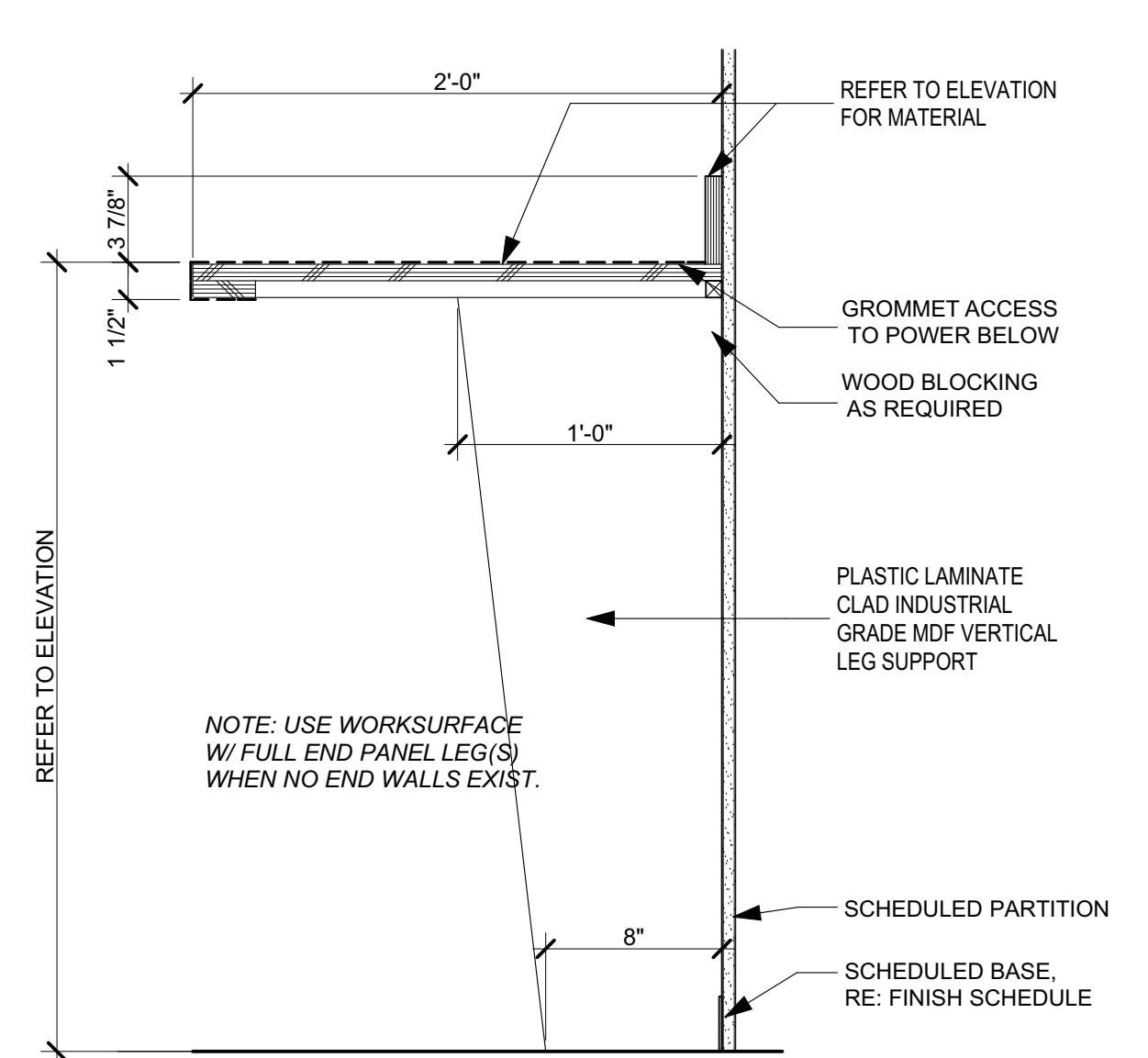
Door Types D5
 Scale: 1 1/2" = 1'-0"



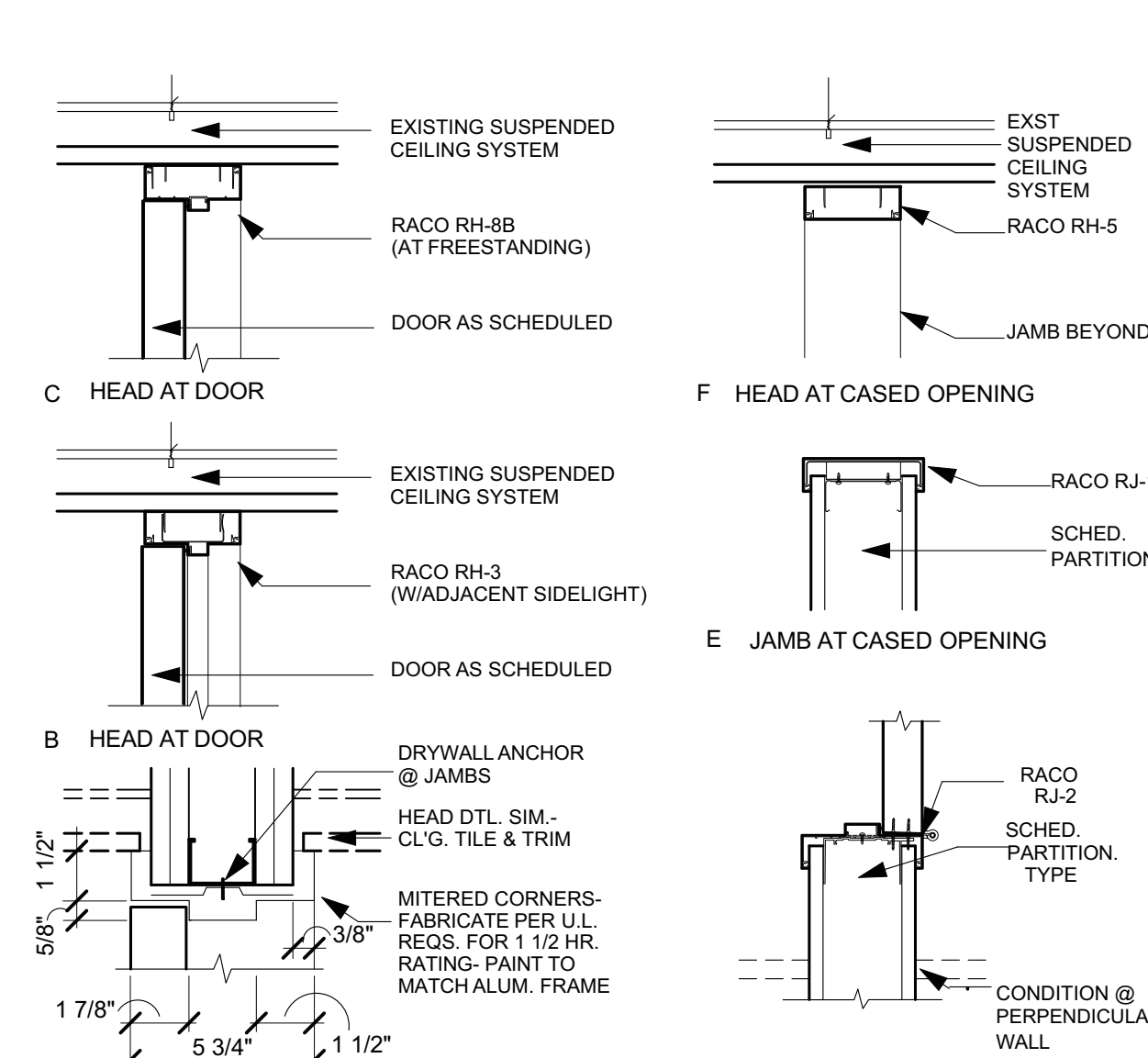
Transaction Ledge at Worksurface C1
 Scale: 1 1/2" = 1'-0"



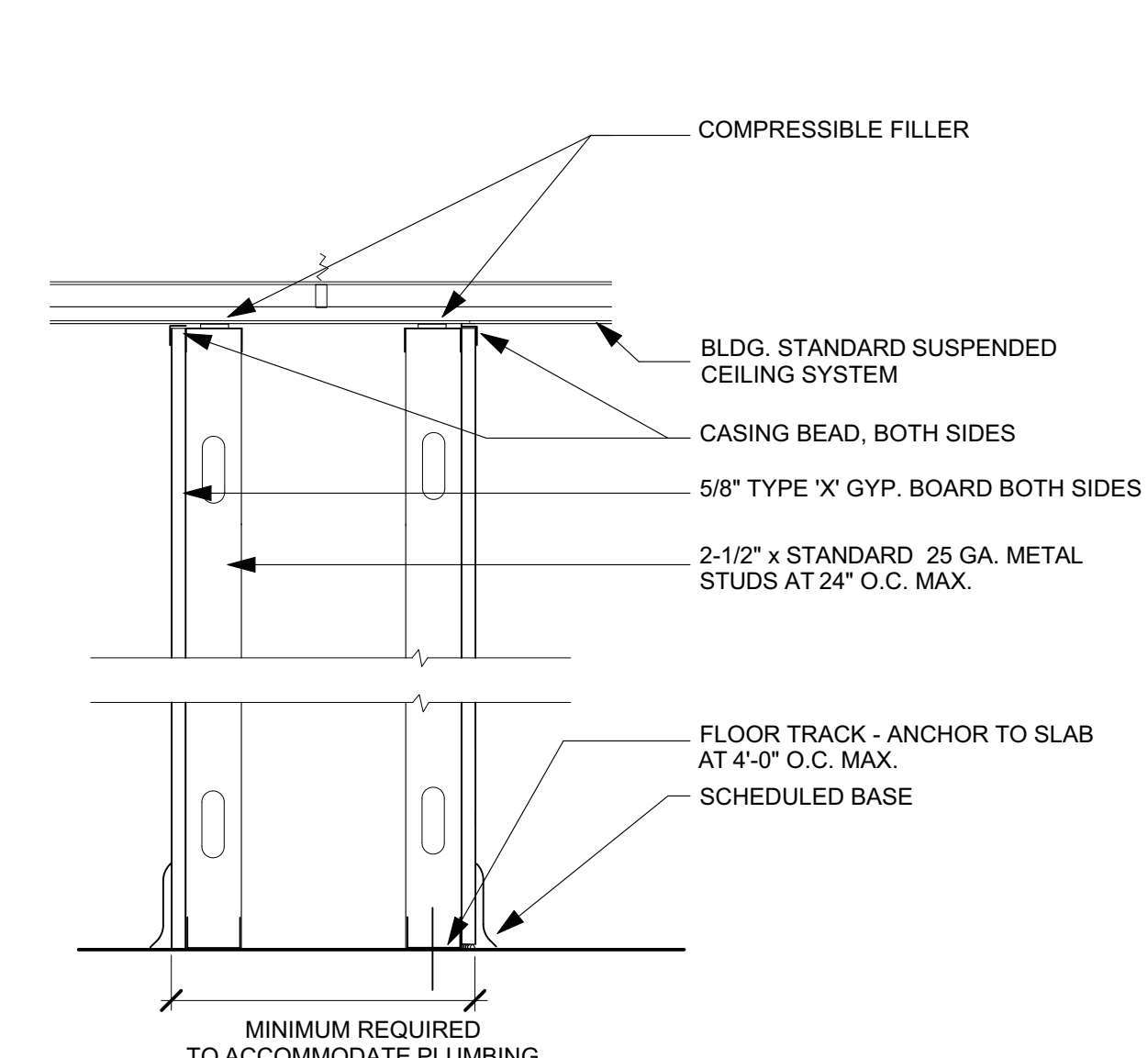
Box/Box/Box/File Base Cabinet C2
 Scale: 1 1/2" = 1'-0"



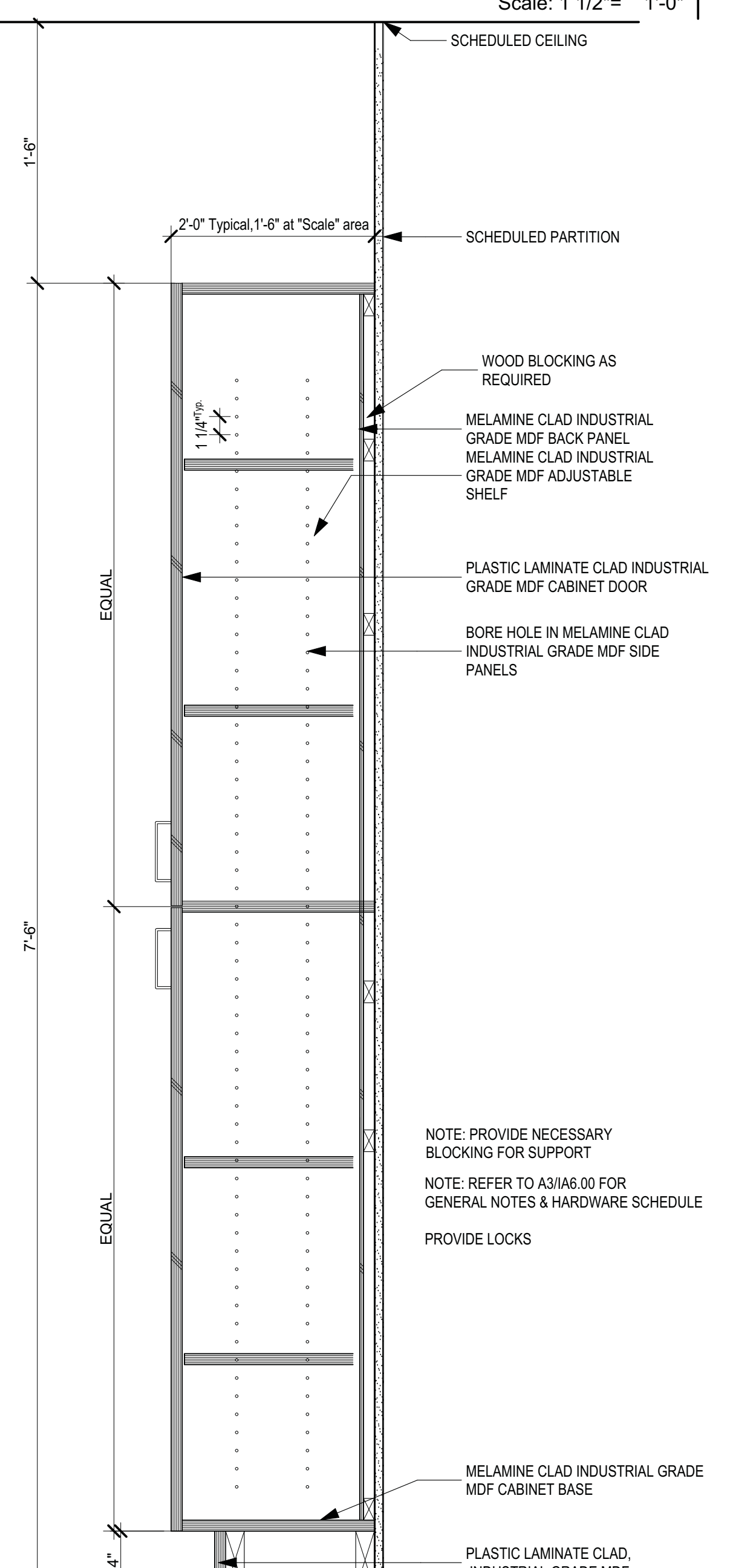
Worksurface C3
 Scale: 1 1/2" = 1'-0"



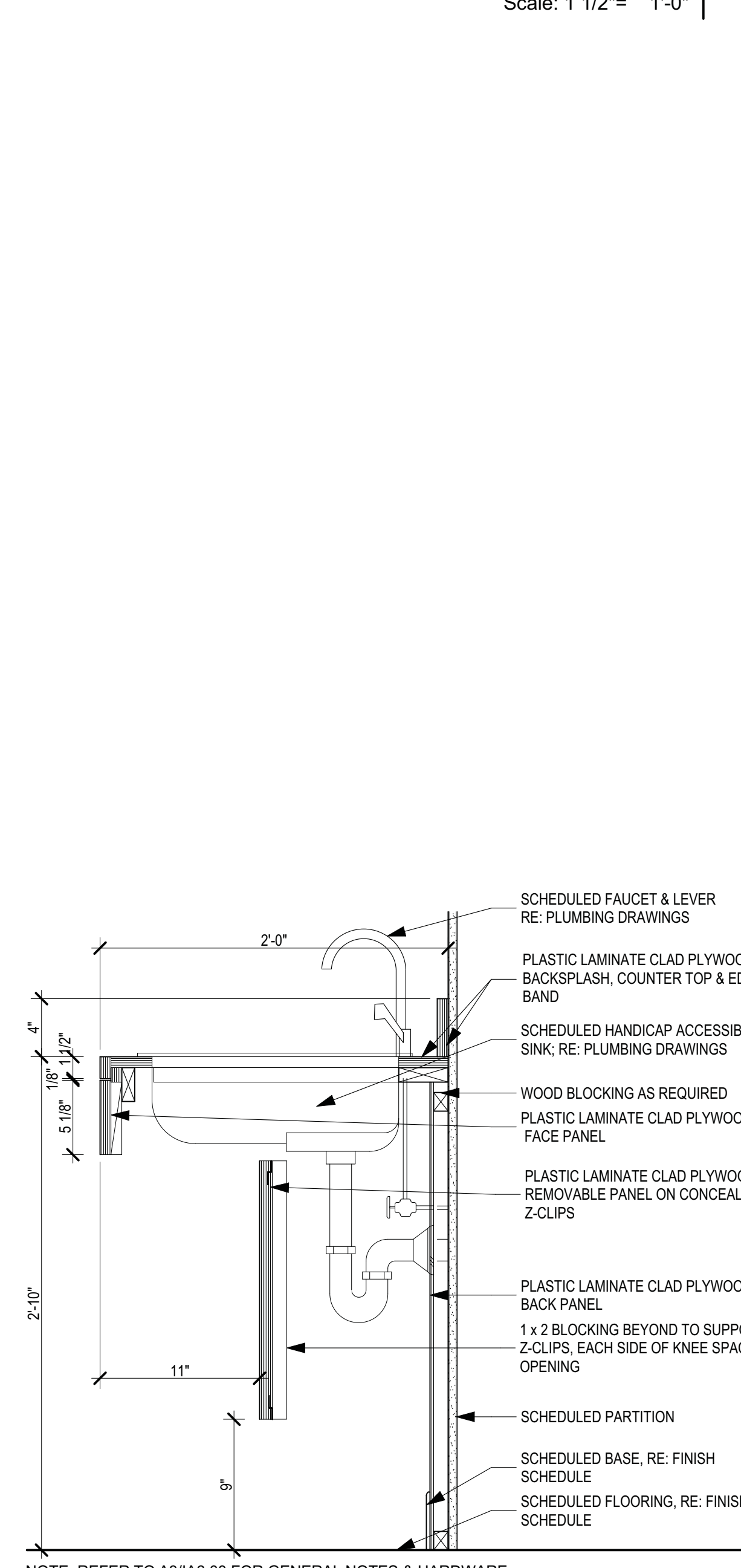
Door Head & Jamb C4
 Scale: 1 1/2" = 1'-0"



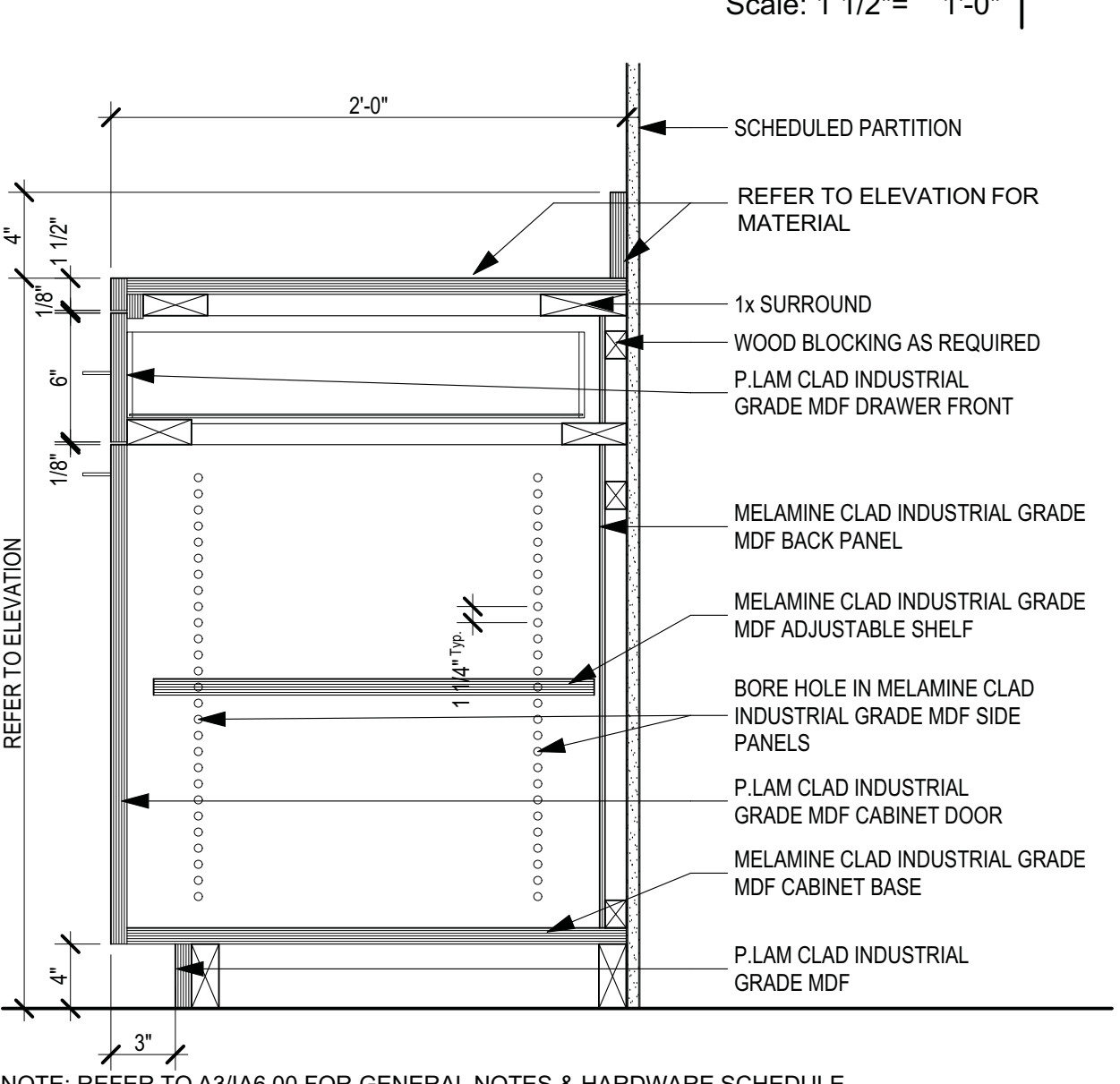
Plumbing Chase C5
 Scale: 1 1/2" = 1'-0"



Full Height Cabinet A1
 Scale: 1 1/2" = 1'-0"



TAS Sink A2
 Scale: 1 1/2" = 1'-0"



Base Cabinet - Single Drawer B3
 Scale: 1 1/2" = 1'-0"

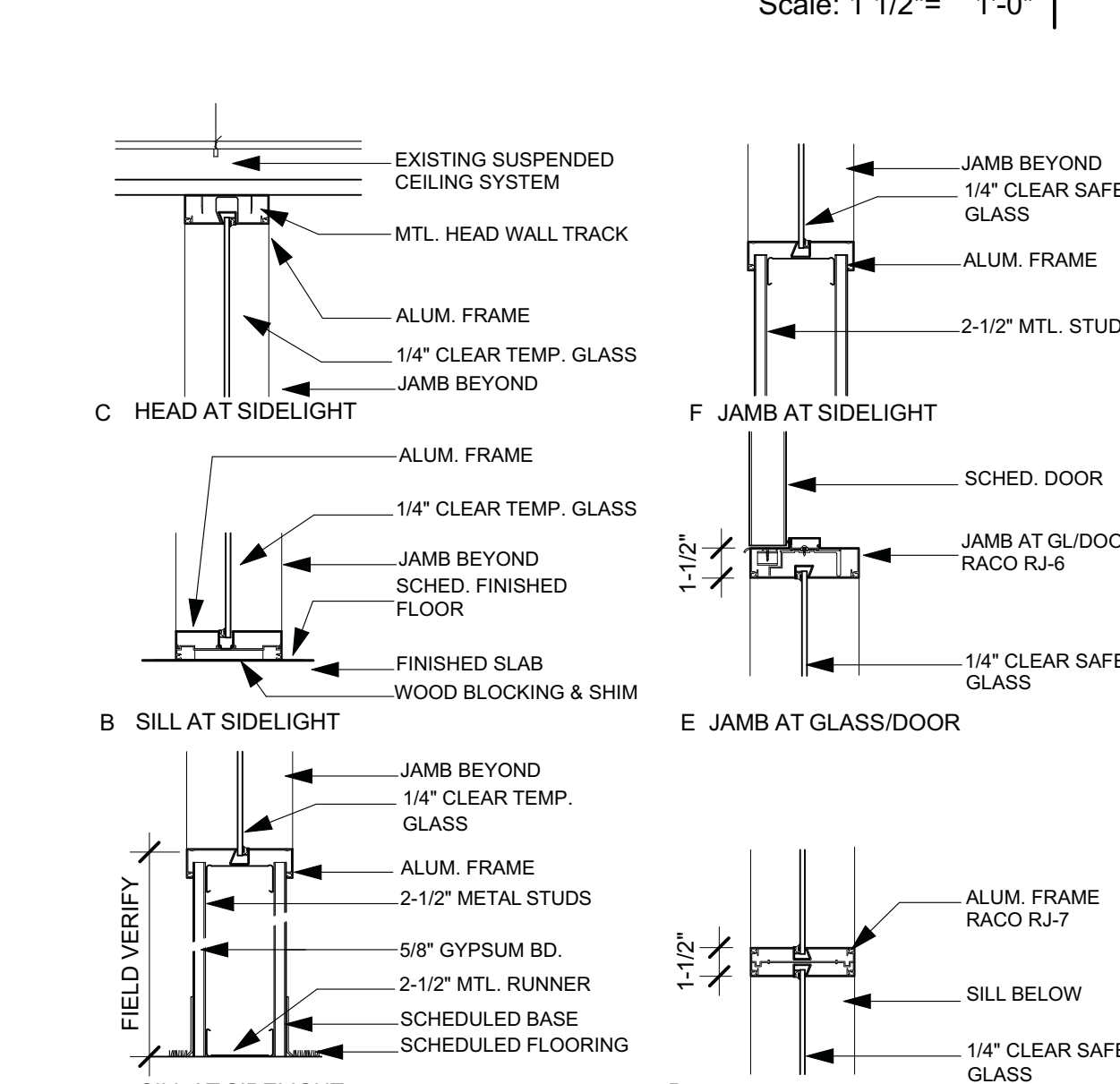
GENERAL NOTES

- ALL EXTERIOR SURFACES TO BE CLAD WITH PLASTIC LAMINATE.
- ALL SEMI-EXPOSED SURFACES TO BE WHITE MELAMINE.
- SUBSTRATE MATERIAL TO BE INDUSTRIAL GRADE MDF, EXCEPT IN WET AREAS.
- ALL BASE CABINETS AT WET AREAS SHALL BE MARINE GRADE PLYWOOD.
- PERFORM ALL WORK IN ACCORDANCE WITH A.W.I. CUSTOM STANDARDS.

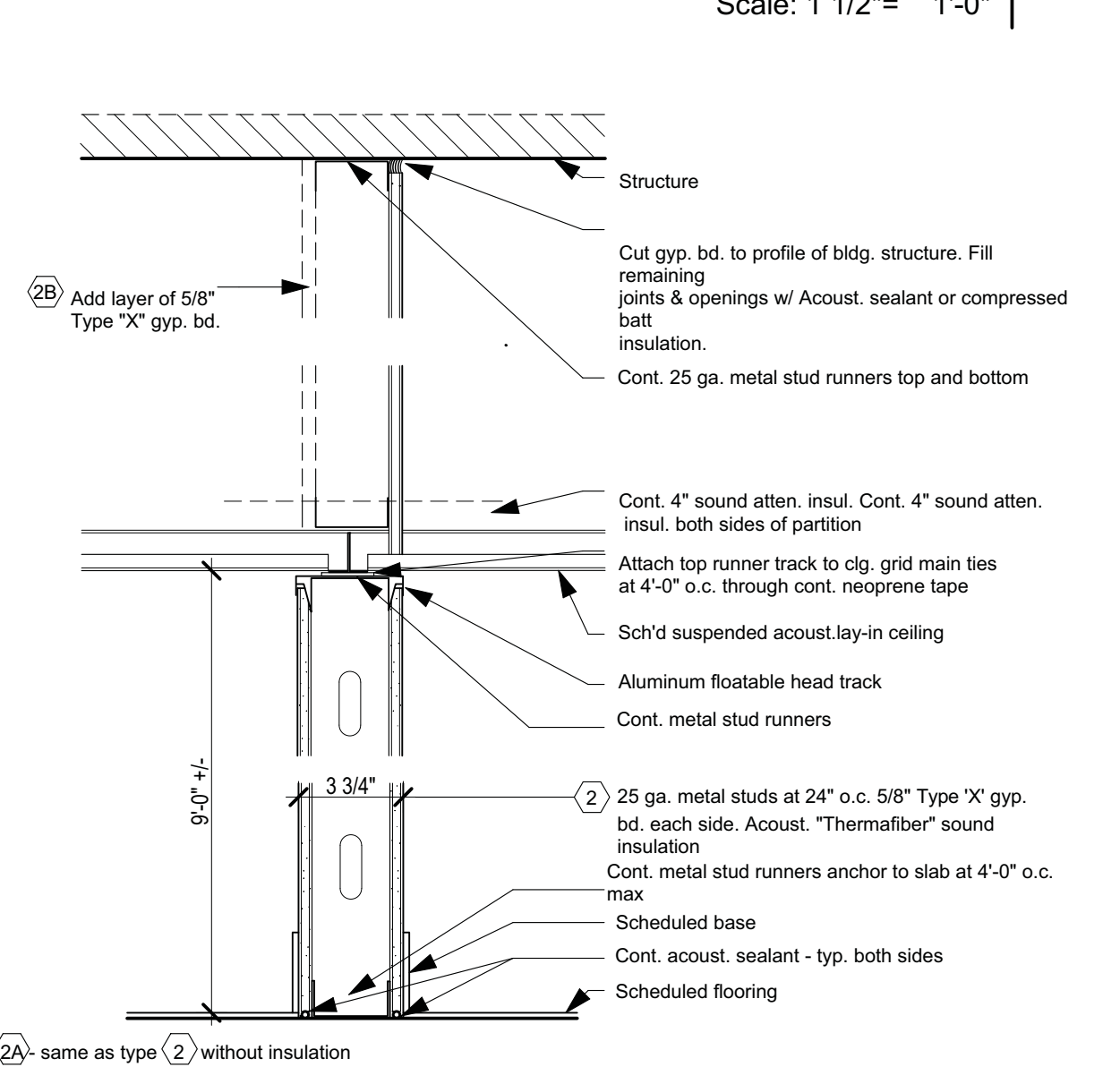
MILLWORK HARDWARE SCHEDULE

part	manufacturer	model no.	finish	description
PULLS	STANLEY	SH4483-5-3	CHROME	3 1/2" WIRE PULL
HINGES	BLUM	B75M558	NICKEL	CLIP 125 - SERIES, FULL OVERLAY
	BLUM	B75M558	NICKEL	CLIP 125 - SERIES, HALF OVERLAY
	BLUM	B74M565	NICKEL	CLIP 125 - SERIES, INSET W/ 5MM MOUNTING PLATE
CATCH LOCK	IVES	IV2BR	CHROME	ELBOW CATCH
	HAFELE	235.08.054	NICKEL	MILLWORK KEYED DOOR LOCK
LATCH SHELF SUPPORT	FERRO	FE9448N	CHROME	ROLLER TOUCH LATCH
DRAWER SLIDE	HAFELE	282.04.711	NICKEL	5MM STEEL SHELF SUPPORT PIN
	ACCURIDE	CB-3832-20"	BLACK ZINC	FULL EXTENSION DRAWER SLIDE, 100 LBS. CAPACITY
COAT ROD	HAFELE	#801.13.202	CHROME	OVAL WARDROBE ROD, WELDED
	HAFELE	#801.33.213	CHROME	OVAL ROD SUPPORT
GROMMET	DOUG MCKEY	EDP SERIES	BLACK	2 1/2" HOLE, SUBMIT SAMPLE
SHelf STANDARdV		85	WHITE	DOUBLE SLOTTED

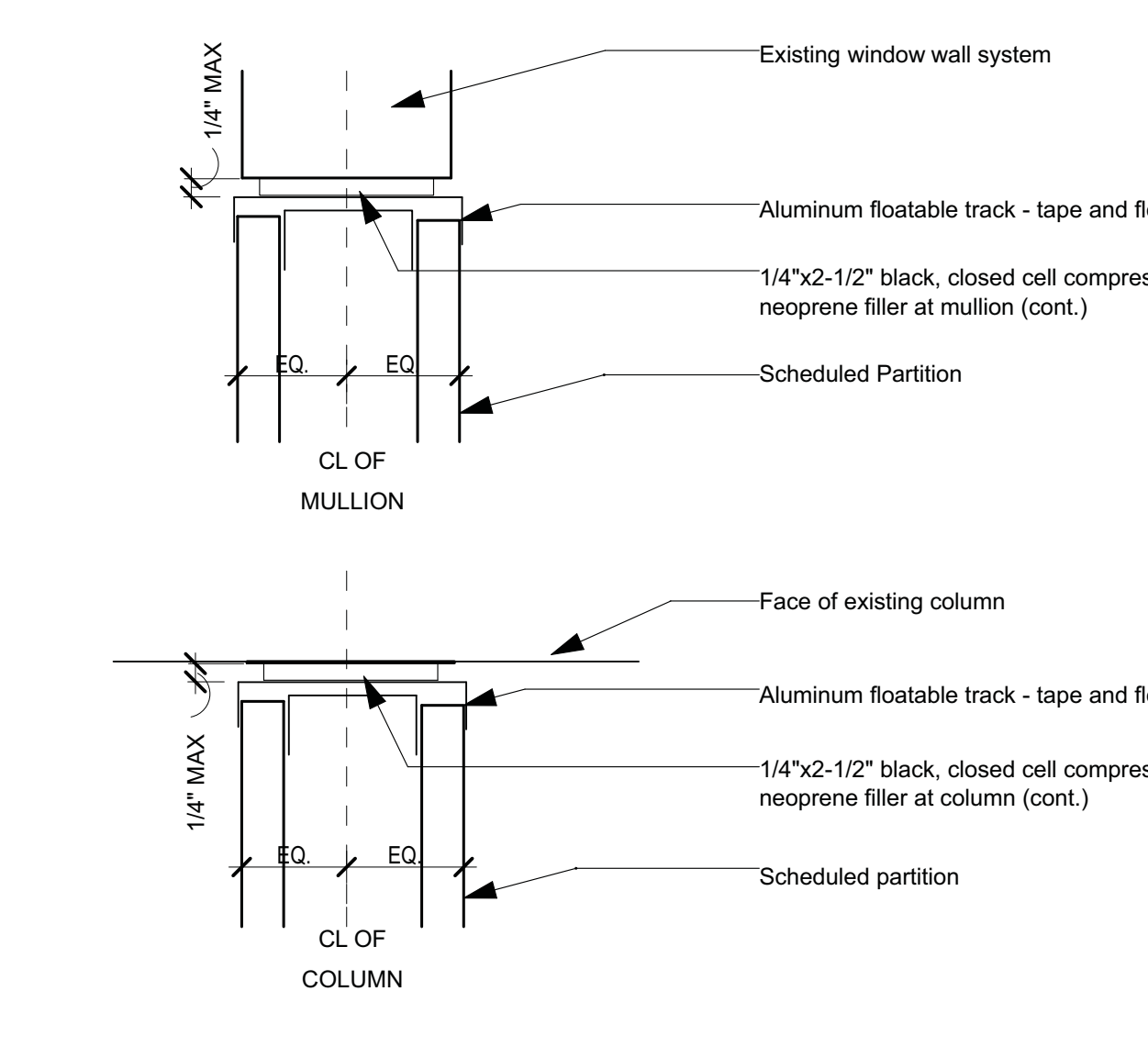
Millwork Notes & Hdr A3
 Scale: 1 1/2" = 1'-0"



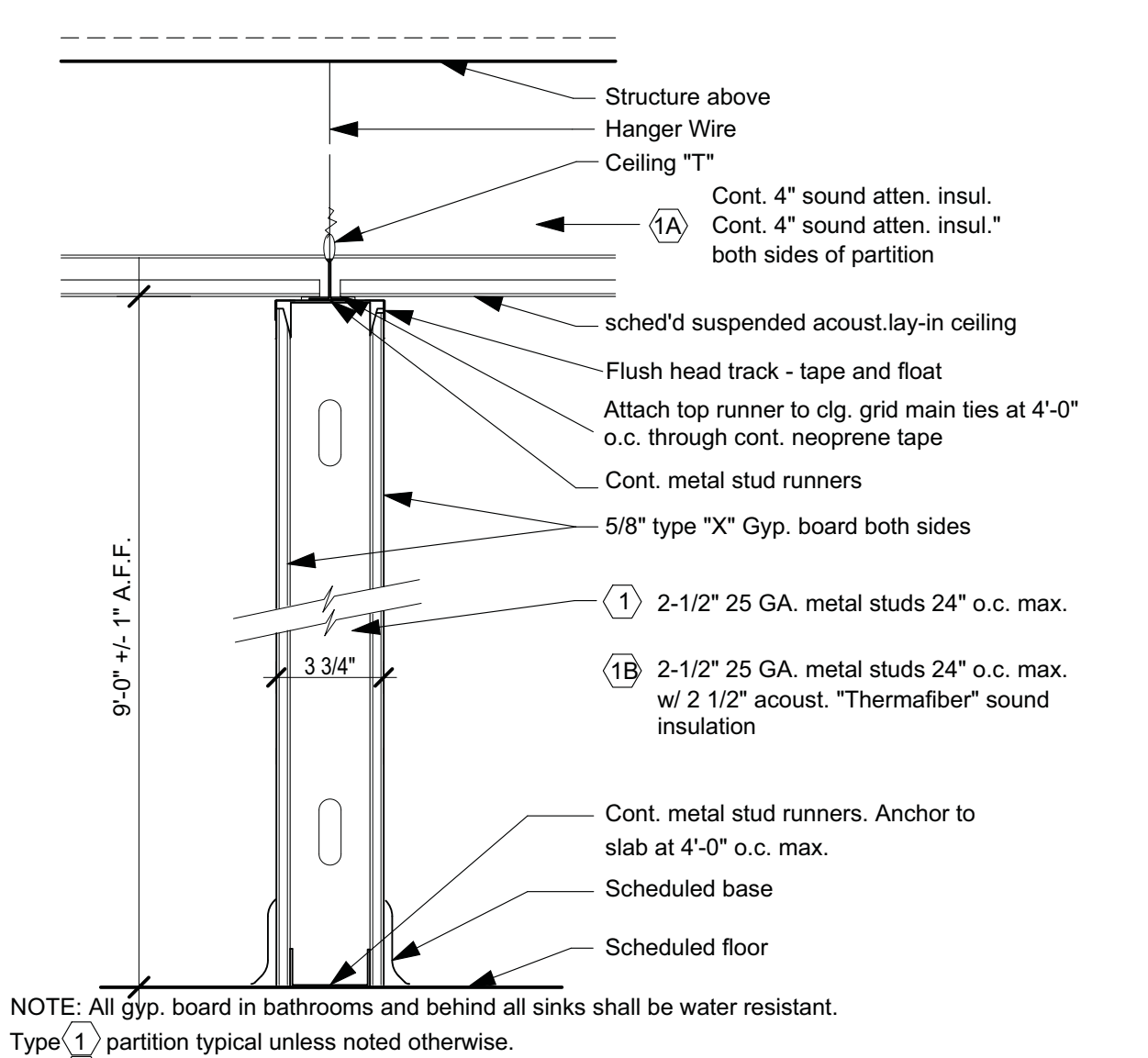
Glazing Details B4
 Scale: 1 1/2" = 1'-0"



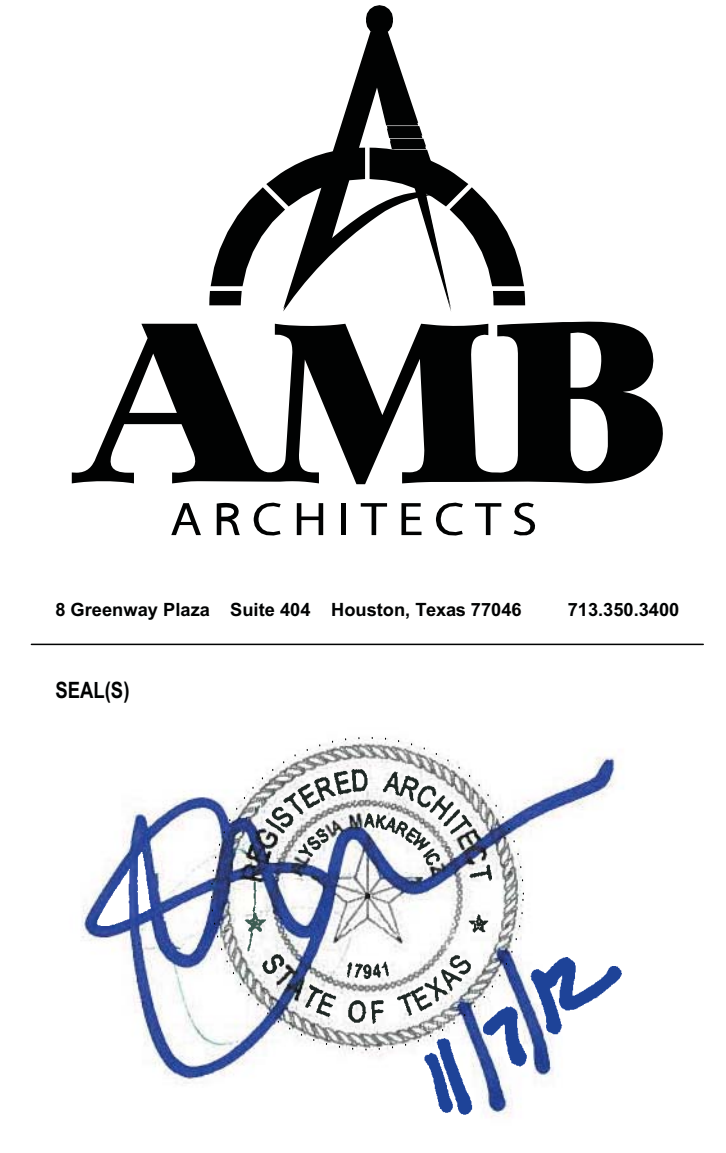
Part Type 2 - Floatable B5
 Scale: 1 1/2" = 1'-0"



Partition at Column/Mullion A4
 Scale: 1 1/2" = 1'-0"



Part Type 1 - Floatable A5
 Scale: 1 1/2" = 1'-0"



PROJECT INFO.

MHMG Bellaire Center
 5303 Bissonnet
 Houston TX 77401

PROJECT NO.

ISSUE

NO	DATE	DESCRIPTION
1	11/7/2012	Permit, Pricing & Construction